

ceiling wall

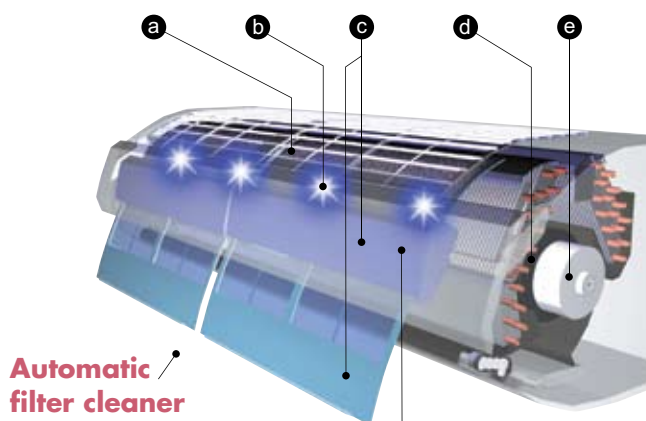


CLASS ALL
A DC

The unique design of the new Fujitsu ceiling wall unit allows it to be positioned unobtrusively in the angle between wall and ceiling. High-performance cooling and heating functions, combined with a large, wide airflow, make this unit a highly efficient and discreet option.



- Large and wide airflow
- High efficiency
- Low noise
- Large centre display
- Easy maintenance
- All DC inverter technology
- Automatic filter cleaning
- UV light filters out bacteria and odours
- Easy-to-use remote controller



Antibacterial dust box

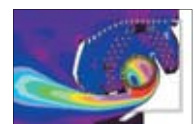
Removes dirt and dust by using double brushes. Dust collection is approx. twice that of previous models based on our company's research.

Bacteria eliminating countermeasure

- a Dirt and dust are bacteria-eliminated by photocatalytic filter.
- b Drives away bacteria and refreshes the air by UV (ultraviolet rays) illumination.

Excellent energy efficiency achieved by unique technology

- c Automatic cleaner function saves energy.
- d Computer-designed fan provides a larger airflow than conventional models.
- e Axial gap fan motor enables high power and high efficiency



CAE analysis

		Nocria Inverter Heat Pump - R410A		
		AWYZ14LB	AWYZ18LB	AWYZ24LB
		AOYZ14LB	AOYZ18LB	AOYZ24LB
Energy Label (Cooling / Heating)		A / A	A / A	A / A
Auto Double Swing		✓	✓	✓
Auto Air Flow Adjustment		✓	✓	✓
Auto Restart		✓	✓	✓
Auto-Changeover		✓	✓	✓
Economy Mode		✓	✓	✓
Sleep Timer		✓	✓	✓
Program Timer		✓	✓	✓
Automatic Filter Cleaner		✓	✓	✓
UV Filter Cleaner		✓	✓	✓
Coil Dry		✓	✓	✓
Washable Panel		✓	✓	✓
Nominal Capacity (kW)	Cooling	4.20 (0.90-5.30)	5.20 (0.90-5.90)	7.10 (0.90-8.00)
	Heating	6.00 (0.90-9.10)	6.70 (0.90-9.70)	8.50 (0.90-11.00)
Moisture Removal	l/h	2.10	2.80	3.00
Dimensions (HxWxD) mm	Inner	250x899x298	250x899x298	250x899x298
	Outer	578x790x300	578x790x300	830x900x330
Net Weight (kg)	Inner	14	14	14
	Outer	39	39	62
Room Air Circulation (high) m ³ /h	Inner	850	850	880
	Outer	1910	1910	3600
Power Supply	VPHz	230/1/50	230/1/50	230/1/50
Power Supply To		Indoor	Indoor	Outdoor
Running Current A	Cooling	4.50	6.90	9.70
	Heating	5.90	7.20	10.30
Starting Current	A	5.90	7.20	10.30
Fuse Rating	A	15	20	30
Power Consumption kW	Cooling	1.02 (0.09-1.75)	1.58 (0.09-2.00)	2.21 (0.11-2.62)
	Heating	1.35 (0.09-2.95)	1.63 (0.09-3.20)	2.35 (0.11-3.68)
Interconnecting Cable		3 + E	3 + E	3 + E
Remote Control Type		Wireless	Wireless	Wireless
Noise Levels (dB(A) Cooling)	Indoor SQ/Q/L/M/H	24 / 29 / 35 / 43 / 46	24 / 29 / 35 / 43 / 46	32 / 36 / 40 / 43 / 47
	Outdoor	46	47	53
Max Pipe Length	m	20	20	30
Max Height Difference	m	15	15	20
Refrigerant Charge	m	15	15	15
Pipe Size (inches)	Gas	1/2 (12.70mm)	1/2 (12.70mm)	5/8 (15.88mm)
	Liquid	1/4 (6.35mm)	1/4 (6.35mm)	1/4 (6.35mm)
Operating Range (°C)	Cooling	-10 ~ 43	-10 ~ 43	-10 ~ 43
	Heating	-15 ~ 24	-15 ~ 24	-15 ~ 24
Refrigerant		R410A	R410A	R410A



For AWYZ14/18LB



For AWYZ24LB

Cooling & Heating capacities are based on the following conditions:

Cooling: Indoor Temp.: 27°C DB/19°C WB, Outdoor Temp.: 35°C DB/24°C WB

Heating: Indoor Temp.: 20°C DB, Outdoor Temp.: 7°C DB

Note: Fuse ratings shown are only for information. Any fuses or MCB's installed on-site should be sized in accordance with I.E.E. regulations.

For full installation details please contact FG Eurofred or your local distributor

Distributed by:



The company reserves the right to make any variation in specification to the equipment described or to withdraw or replace products without prior notification or public announcement. All descriptions, illustrations, drawings and specifications in this publication present only general particulars and shall not form any part of any contract. For full installation details please contact FG Eurofred or your local distributor.

